

## Long Dee Shackle

**Pin Type:** Removable Pin

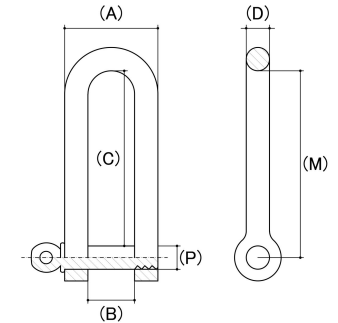
**Material:** Stainless Steel

**Class Grade:** A4-70 G316

**Corrosion Protection Level:** Ultimate

**Standard:** No International standard applies to this range

**Comments:** This product range is not rated and has no markings. Breaking load information provided is to be used as a guide only



*Cad Drawings shown for graphic representation only.\**

Size	Width Of Opening (B) (mm)		Outside Diameter Of Eye (A) (mm)		Inside Eye Length (C) (mm)		Inside Eye Length to Pin Centre (M) (mm)		Pin Diameter (P) (mm)	sku (Part Number)
	Min	Max	Min	Max	Min	Max	Min	Max		
4mm	7.00	9.00	15.00	17.00	30.00	32.00	31.00	33.00	4.00	62DSLS432M
5mm	9.00	11.00	19.00	21.00	37.00	39.00	39.00	41.00	5.00	62DSLS540M
6mm	11.50	13.50	22.00	24.00	47.00	49.00	45.00	47.00	6.00	62DSLS648M
8mm	16.00	18.00	31.00	33.00	60.00	62.00	64.00	66.00	8.00	62DSLS864M
10mm	19.00	21.00	38.00	40.00	75.00	77.00	79.00	81.00	10.00	62DSLS1080M
12mm	25.00	27.00	48.00	50.00	88.00	90.00	94.00	96.00	12.00	62DSLS1296M

**Disclaimer:**

Dimensional data and technical information was obtained from publicly available sources and not acquired through standard agencies. It has been completed and compiled for reference purposes only; where discrepancies are found they are subject to change without notice. Bolt & Nut Australia makes no warranties or representations regarding the accuracy and validity of the compiled information and data. Contact the relevant standard authorities for accurate and detailed information.

\* Cad Drawings may not reflect diameter, thread length or overall length.

© Bolt & Nut Australia Pty Ltd. All rights reserved.

Version: 23 Sep 2024